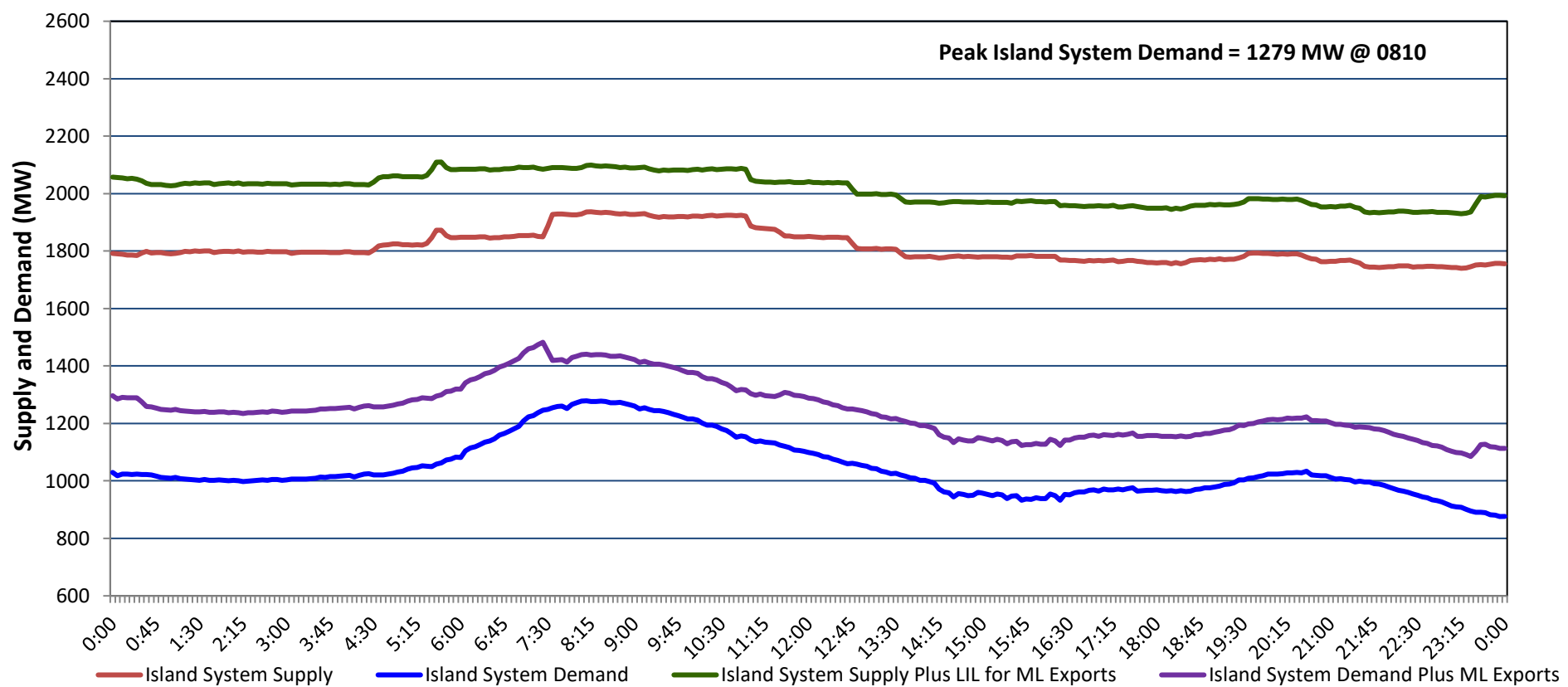


Newfoundland Labrador Hydro (NLH) Supply and Demand Status Report Filed Friday, March 21, 2025

Section 1 Island Interconnected System - Supply, Demand & Exports Actual 24 Hour System Performance For Thursday, March 20, 2025



Island Supply Notes For March 20, 2025

- A** As of 0952 hours, March 11, 2025, Granite Canal Unit available at 32 MW due to forced derating (40 MW).
B As of 0915 hours, March 16, 2025, Bay d'Espoir Unit 6 unavailable due to planned outage (76.5 MW).
C At 0902 hours, March 20, 2025, Holyrood Unit 3 available but not operating 130 MW (150 MW).

Section 2 Island Interconnected System - Supply, Demand & Outlook

Fri, Mar 21, 2025	Island System Outlook ²	Seven-Day Forecast	Island System Daily Peak Demand (MW)	
			Forecast ⁸	Adjusted ⁶
Island System Supply: ⁴	1,840 MW	Friday, March 21, 2025	1,105	1,002
NLH Island Generation: ^{3,7}	1,460 MW	Saturday, March 22, 2025	1,010	908
NLH Island Power Purchases: ⁵	130 MW	Sunday, March 23, 2025	1,135	1,032
NP and CBPP Owned Generation:	220 MW	Monday, March 24, 2025	1,200	1,096
LIL/ML Net Imports to Island: ⁹	30 MW	Tuesday, March 25, 2025	1,270	1,165
		Wednesday, March 26, 2025	1,275	1,170
7-Day Island Peak Demand Forecast:	1,275 MW	Thursday, March 27, 2025	1,240	1,136

Island Supply Notes For March 21, 2025

- Notes:**
1. Generation outages for running and corrective maintenance are included. These are not unusual for power system operations. They generally do not impact customer supply. Hydro schedules outages to system equipment whenever possible to coincide with periods when customer demands are low and sufficient supply reserves are available. However, from time to time equipment outages are necessary and reserves may be impacted.
 2. As of 0800 Hours.
 3. Gross continuous unit output.
 4. Gross output from all Island sources (including Note 3).
 5. NLH Island Power Purchases include: ML Imports, Exploits Generation, Rattle Brook, Star Lake, Wind Generation and capacity assistance (when applicable).
 6. Adjusted for interruptible load and the impact of voltage reduction when applicable.
 7. Due to limitations inherent in the design of combustion turbines, the output of combustion turbines may be reduced in the event that ambient temperatures exceed the threshold required for full rated output. This threshold is dependent on the design of each turbine.
 8. Does not include ML Exports.
 9. LIL Import sunk in the Island System. Actual LIL flows will be restricted by various system conditions including, but not limited to, Island Load, ML Exports and Avalon Unit status.

Section 3 Island Peak Demand and Exports Information Previous Day Actual Peak and Current Day Forecast Peak

Thu, Mar 20, 2025	Island Peak Demand ¹⁰	8:10	1,279 MW
	Exports at Peak		162 MW
	LIL Net Imports to Island		1,022 MWh
Fri, Mar 21, 2025	Forecast Island Peak Demand		1,105 MW

- Notes:** 10. Island Demand is supplied by NLH generation and purchases, LIL Imports plus generation owned and operated by Newfoundland Power and Corner Brook Pulp & Paper (Deer Lake Power, DLP).